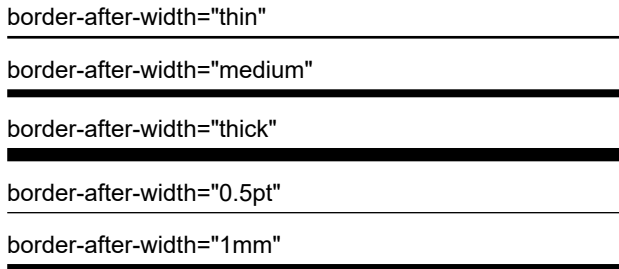


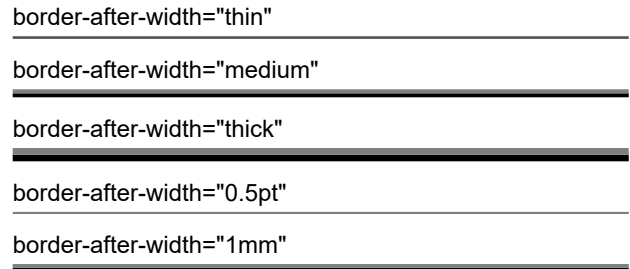
# Border style and border width

It is possible to draw border lines around formatting objects. This sample shows variations in line style and line weight. Border color may additionally be specified with 'border-color'.

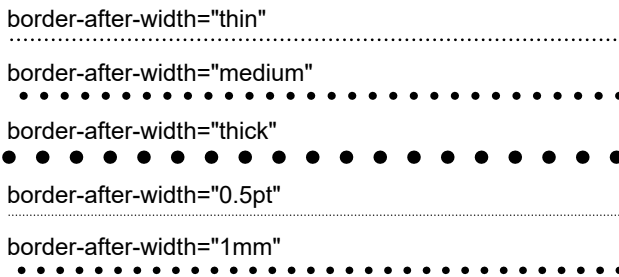
## border-after-style="solid"



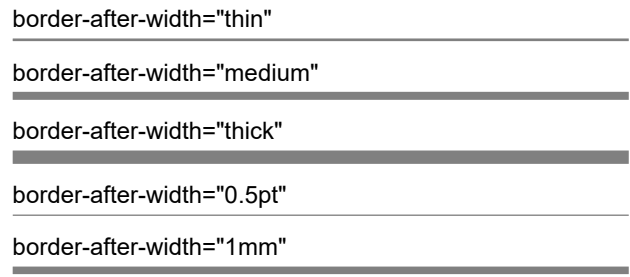
## border-after-style="ridge"



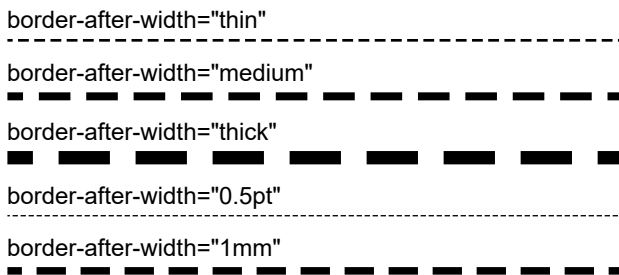
## border-after-style="dotted"



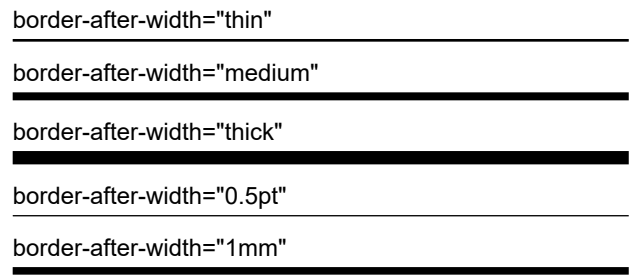
## border-after-style="inset"



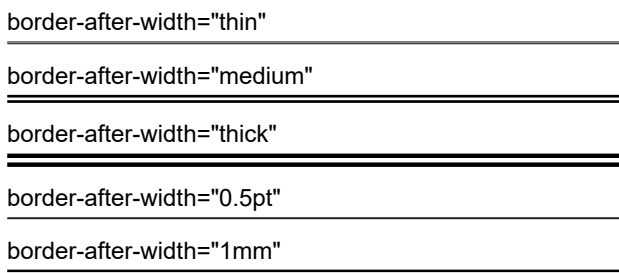
## border-after-style="dashed"



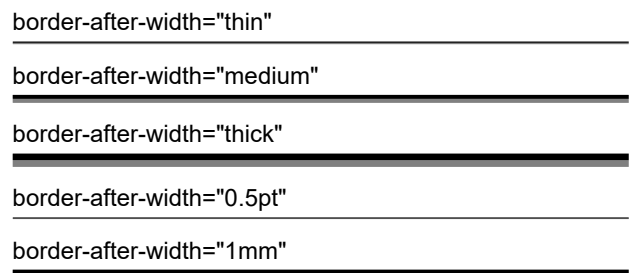
## border-after-style="outset"



## border-after-style="double"<sup>(1)</sup>



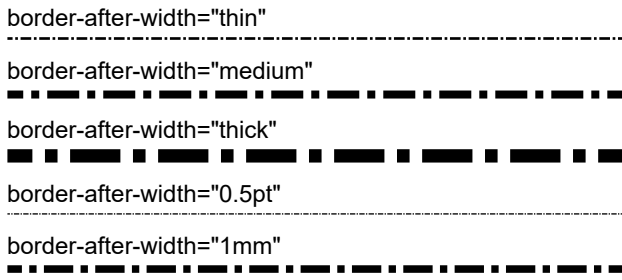
## border-after-style="groove"



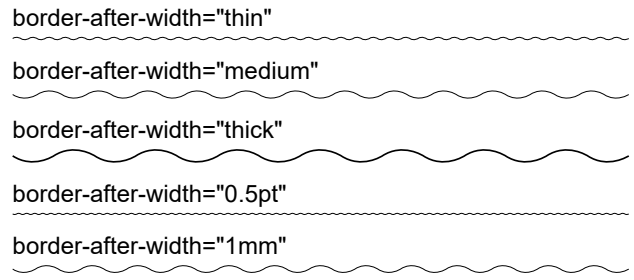
<sup>(1)</sup> The [axf:border-double-thickness](#) extension property specifies the width of the lines and the space between them.

Antenna House Formatter supports these additional border styles. See “<[border-style](#)>” in the Online Manual.

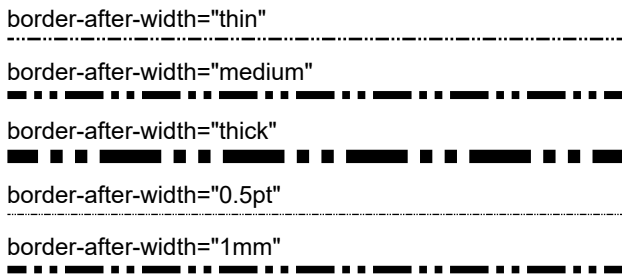
### **border-after-style="dot-dash"**



### **border-after-style="wave"<sup>(2)</sup>**



### **border-after-style="dot-dot-dash"**



<sup>(2)</sup> The ‘[axf:border-wave-form](#)’ extension property specifies the wave form length and the line thickness.